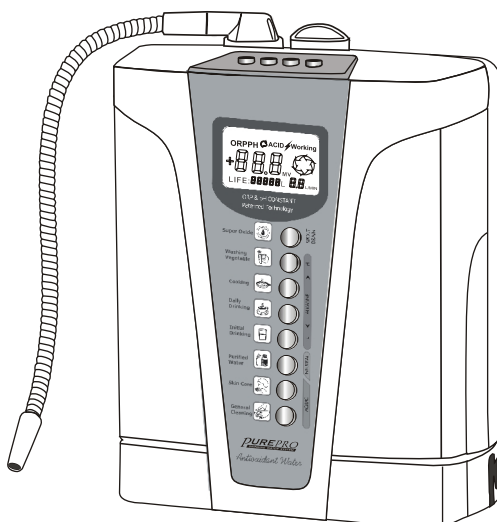


# Water Ionizer

JA-703

User's Manual



## [ CONTENT ]

• Safety Information	02
• Machine & Package Contents	03
• Installation	04
• Applications & uses of ionized water	07
• Daily Cleaning Cycle	08
• Overview Diagram	09
• Front Board Function	10
• How to Make Super Acid Water	11
• Panel Introduction	12
• How to Test the pH of Your Water	13
• Filter Replacement	14
• Troubleshooting	16
• Limited Warranty	17
• Specifications	18

# What is Ionized Water and Why We Should Consume It

Alkaline Ionized Water is by far the most superior drinking water available. Ionized Water is electronically enhanced water created through electrolysis. It is produced by running normal tap water over negative (cathode) and positive (anode) electrodes, which ionizes the minerals in the water creating positive (hydrogen) and negative (hydroxyl) ions. The electrodes are composed of titanium, the hardest metal known, and coated with platinum, which is an excellent and durable conductor.

The magic comes when the membranes separate the hydrogen and hydroxyl ions, thus creating alkaline and acidic water. These two waters are always produced simultaneously during the ionization process, 70% Alkaline Ionized Water and 30% Acid Ionized Water. Therefore, producing one gallon of Ionized Water yields approximately 0.7 gallons of Alkaline Water and 0.3 gallons of Acid Water.

Electrolysis is most often conducted by placing the anode and cathode in the same solution without a membrane barrier between them. The negative and positive ions cancel one another out, usually causing strong discoloration of the water. The semi-permeable membrane that separates positive and negative ions into alkaline and acid water is one of the great health breakthroughs of the 20th Century.

The properties of Alkaline Ionized Water are that it is an antioxidant, and it is alkalizing, hydrating and detoxifying. If we expect to be healthy we must **Hydrate, Alkalize and Detoxify** the body.

**Disclaimer:** All information presented in this manual, whether by distributors of these products or associated manufacturers, has not been evaluated by the FDA, and is not intended to diagnose, treat, cure or prevent any disease. These products are neither formulated nor prescribed for any medical condition. They are intended for use as an important addition to the daily diet.

# 1. Safety Information

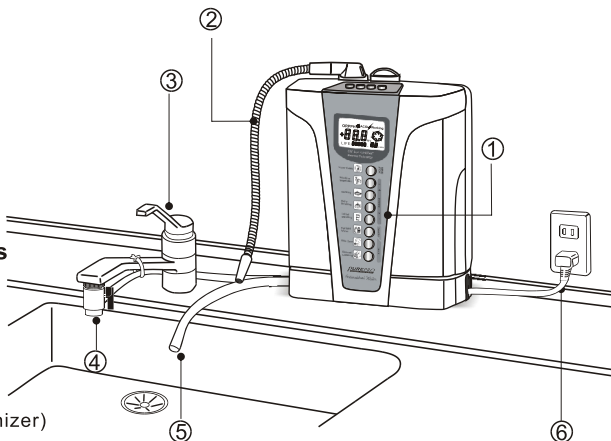
## ***Read manual prior to installation and operation***

- Check with your health practitioner to make sure that prescribed medications for existing conditions will not be adversely affected by drinking alkaline water.
- Your new Water Ionizer is intended as a point-of-use appliance only. Serious damage may result from misuse of your unit. Never attach any plumbing or tubing to the flexible metal hose.
- Your Water Ionizer will only operate on 110V AC (220V available upon request). Severe damage will occur if used on incorrect line voltage.
- Never drink the acidic water from your Water Ionizer.
- Never operate the unit with hot water. Serious filter and electrical damage will result.
- The Water Ionizer is NOT intended for use with microbiologically unsafe water.
- Follow manufacturer's suggested uses for pH levels. When first consuming alkaline water you may experience detoxification symptoms such as: headache, rash, diarrhea, cold or flu symptoms and/or nausea.
- No medical claims have been made nor implied by the Manufacturer. Always see your physician at the first sign of illness. Manufacturer is not responsible for adverse effects that may result from the use, or misuse, of ionized water.
- Never open the shell of your unit. There are no serviceable components inside the unit. The filter is accessible by the removable cover on the back of the unit.
- Maintain a clean and dry area around your unit. Never allow unit to sit in standing water.
- Notify your dealer at the first sign of malfunction and discontinue use immediately.
- Always plug your water ionizer into a GFI outlet whenever possible.

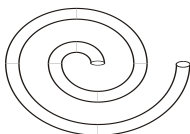
## 2. Machine & Package Contents

### Ionizer set up components

- ① Control Panel
- ② Stainless Steel hose for Alkaline Water
- ③ Faucet (not included with Ionizer)
- ④ Faucet diverter
- ⑤ Acidic Water Hose
- ⑥ Electrical Plug



### Parts included with Water Ionizer



Flexible Hose



Faucet Diverter



Stainless Steel Outlet Hose



pH test kit & pH chart



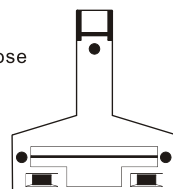
Screw (3)



Bracket Mounting Bolt(1)



Plastic Insert Nail (3)



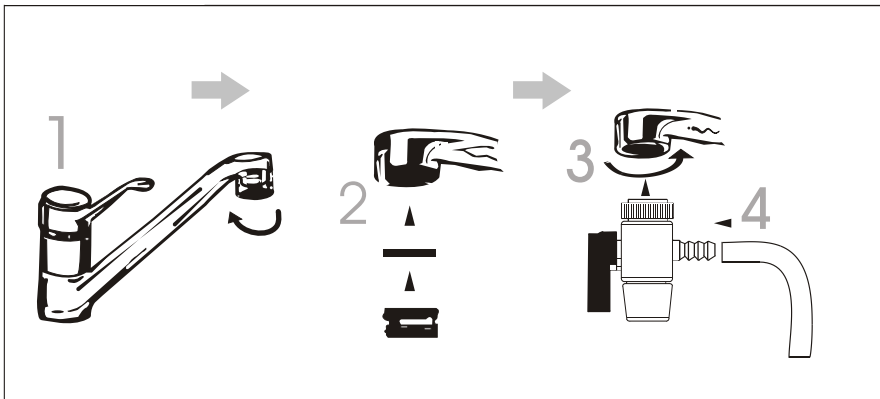
Wall Mount Bracket



### 3. Installation

#### A. Installation for standard faucet

- 1) Remove the existing aerator from your faucet.
- 2) Screw in the adapter that is needed for your faucet.
- 3) Attach diverter to the faucet or adapter.
- 4) Attach plastic flexible tubing to diverter for the ionizer inlet.

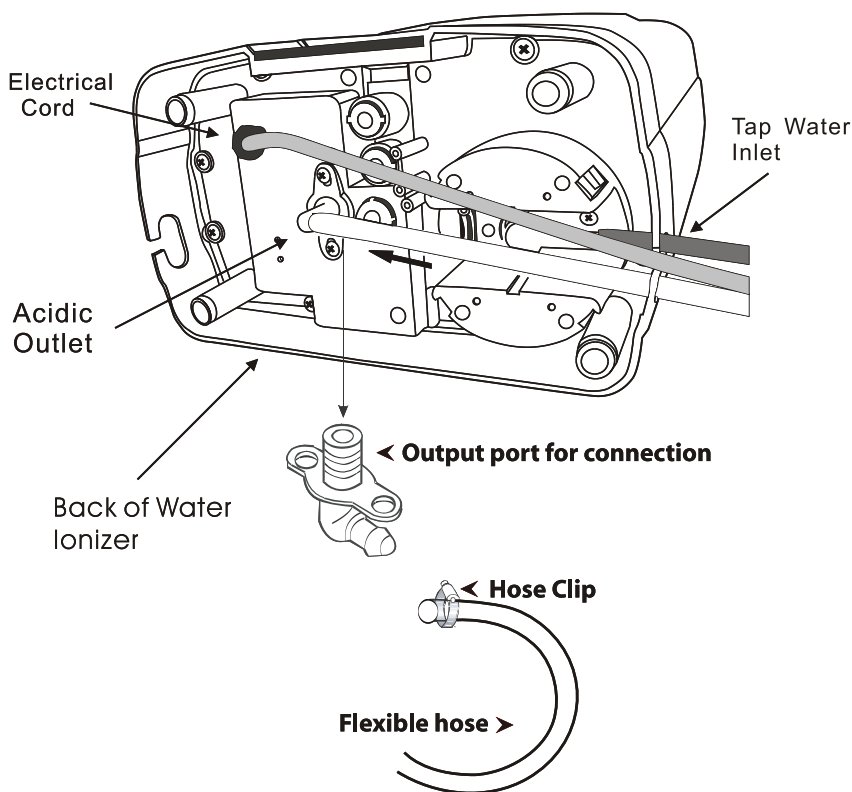


## 3. Installation

### B. Flexible Hose

First: cut a sufficient length of hose to reach from the “Acidic Water Output” port to the point where you would like the acidic water to drain.

Second: cut a sufficient length of hose to reach from the Water Ionizer diverter to the water input port on the bottom right side of the Water Ionizer. Use hose clamps for a secure fit.

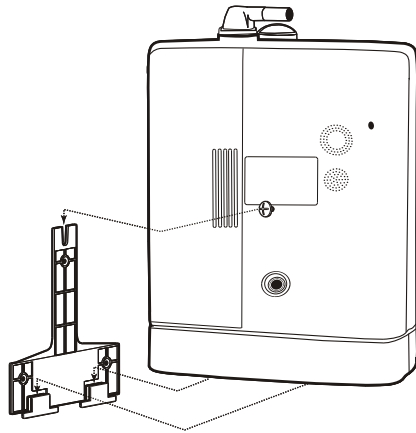
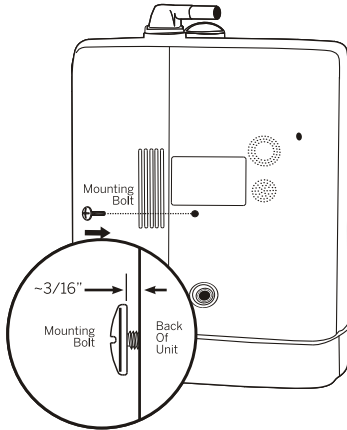
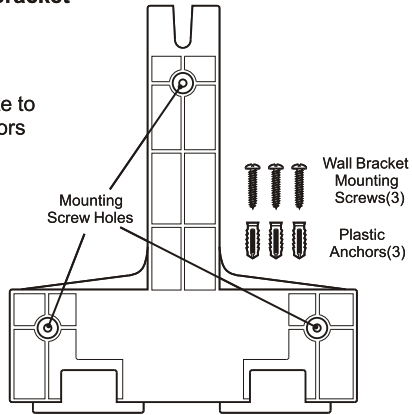


## 3. Installation

### C. Bracket for wall mounting

#### Wall Mount Installation Using The Wall Bracket

1. Select a suitable wall location to mount the unit. Allow sufficient overhead clearance to hang the unit on the bracket.
2. The wall bracket may be used as a template to mark locations for screws and plastic anchors (if used).
3. Drill holes and install plastic anchors as needed.
4. Secure the wall bracket to the wall using the supplied screw.



5. Install the mounting bolt into the back of the unit. Tighten to allow a space of approximately 3/16" between the mounting screw head and the back of the unit.

6. Hang the unit on the wall bracket.

## 4. Applications & Uses of Ionized Water

### **How to create Alkaline Ionized Water**

Turn on your Water Ionizer and let the water flow through the unit for 90 seconds. The water will turn a dark blue color for several seconds during your first use of the unit. This is caused by carbon dust coming off the carbon filter. It is NOT harmful. If the cleaning cycle light is blinking allow the ionizer to complete the cleaning cycle, which takes approximately 30 seconds. The magic comes when the membranes separate the hydrogen and hydroxyl ions, thus creating alkaline and acidic water. These two waters are always produced simultaneously during the ionizing process, 70% Alkaline Ionized Water and 30% Acid Ionized Water. Therefore, producing one gallon of Ionized Water yields approximately 0.7 gallons of Alkaline Water and 0.3 gallons of Acid Water. Choose the alkaline level button (1-5) that you would like to consume. Most people begin drinking Ionized Water on level 1 or 2 to avoid the strong detoxification effects. Alkaline Ionized Water is an antioxidant, and is very alkalizing, hydrating and detoxifying.

### **How to Consume Alkaline Ionized Water**

To make the best use of its extraordinary health qualities, alkaline ionized water should be consumed straight out of the ionizer because it possesses its strongest antioxidant potential at that moment. You will notice small bubbles in the water when you first fill a glass of ionized water. These are hydroxyl ions that are one of the antioxidants of the water. It is also what provides the body with extra oxygen and therefore energy.

Once ionized water is produced, it begins to lose its strength. First to go are the antioxidants, which last a maximum of 24 hours. The alkalinity (higher pH) of ionized water will last a few days to a week. The hydration and detoxification properties will last several weeks to several months. Even if ionized water was produced weeks earlier, it is still vastly superior to conventional water. Upon waking, consume a glass of ionized water to re-hydrate and stimulate the body. It is recommended to consume between 24-32 oz. of fresh Ionized Water in the first hour after waking. Ionized water should be consumed throughout the day except 30 minutes before, during and at least 30 minutes after a meal. Drinking any water around mealtime dilutes the entire digestive process.

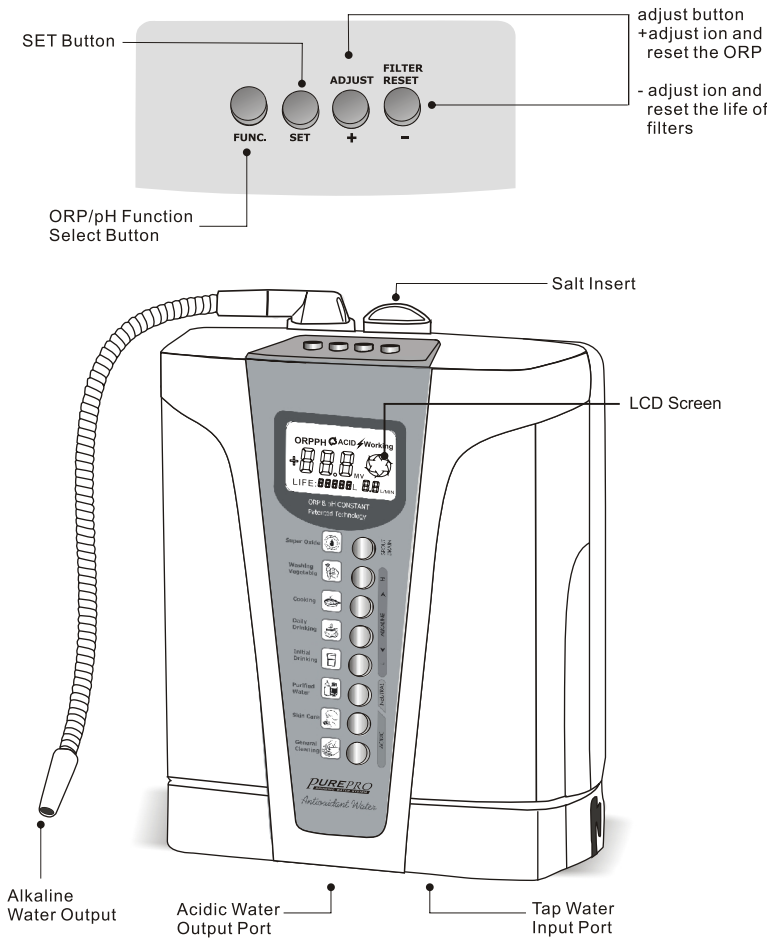
### **Using Acid Ionized Water - External use only!**

Use acid water on the outside of the body for healing cuts, blisters, scrapes, rashes, diabetic ulcers, mosquito bites, bee stings, to condition hair and skin, chapped hands and dry, itchy skin, acne and fungus such as athletes foot. It works as an astringent to pull skin tighter and remove wrinkles. It effectively removes plaque from teeth and you can gargle with it to relieve sore throats or other mouth sores. Wash vegetables, fruits, meats and fish with it to kill bacteria. Acidic water also substantially promotes plant growth and overall health and it more than doubles the life of cut flowers.









## 5. Daily Cleaning Cycle

- 1) When you notice a blinking light on your Water Ionizer (on average this happens 1-3 times per day) it is indicating that it needs to be cleaned. The next time you turn the water flow on the Water Ionizer will perform a cleaning Cycle.
- 2) Turn the water on. The ionizer will beep and the screen will be red while it cleans itself.
- 3) Allow the water to run for 15-30 seconds.
- 4) Turn the water flow off.
- 5) Now your unit has been cleaned and you may use it normally for alkaline or acidic water.

# 6. Overview Diagram



## 7. Front Board Functions

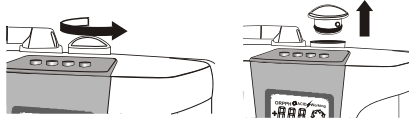
SPOUT DRAIN  H ▲ ALKALINE ▼ L		<b>Super Oxide</b>	Only for cleaning. Turn on the Add hole on the top → take out the inside tube, and add the eatable salt (Do not put eatable salt over the circle hole on the top) → put back the Inside tube in Add hole. → Tight the top → pull the bottom of Super Acid Water → turn on the water starter.
		<b>Washing Vegetable</b>	Level 4: Ideal setting once the body has adjusted to drink alkaline water. Use this level in the fourth week and thereafter.
		<b>Cooking</b>	Level 3: Higher alkaline setting than Level 2. Drink at this level for the third week.
		<b>Daily Drinking</b>	Level 2: Higher alkaline setting than Level 1. Drink at this level for the second week.
L ▼ NEUTRAL / ACIDIC		<b>Initial Drinking</b>	Level 1 : Lowest alkaline setting. Drink at this level for the first week.
		<b>Purified Water</b>	Purified water: Suitable to drink with medication and suitable for infant and adult.
		<b>Skin Care</b>	Level 1 (pH 5.5): Skin care washing
		<b>General Cleaning</b>	Level 2: For baths or washing kitchen utensil.

## 8. How to Make Super Acid Water

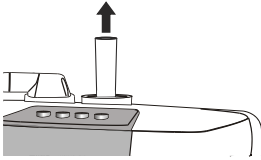
### Super acidic water / Mineral port

A pH level down to 2.0+ is possible (super acidic water ) using the mineral port option. This water is astringent.

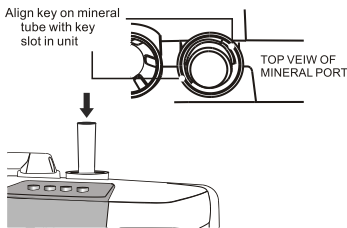
**CAUTION:** Super acidic water is for external use only. **Do NOT DRINK** acidic water from your water ionizer.



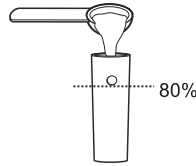
1. Remove the mineral port cover by turning counter-clockwise.



2. Remove the mineral tube from the unit.

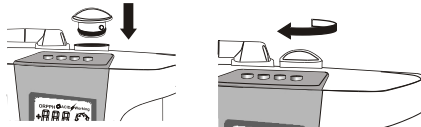


4. Reinsert the mineral tube taking care to align the key on the outside of the tube with the keyslot the unit. The mineral tube must be completely inserted before installing cover.



**NOTE:** Do not over fill past hole or tube may clog.

3. Fill the mineral tube 80% with edible salt (sea salt is preferred ) - this will produce approximately one quart of super acidic water.



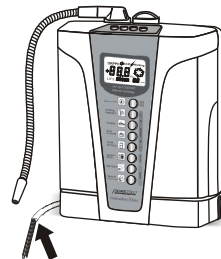
5. Replace the mineral port cover. Gently finger tighten, turning clockwise.

**CAUTION:** Never operate unit without mineral port cover securely locked in place.



6. Press the Super Oxide button to set the unit to produce super acidic water. Turn on the water to the unit, taking care with the amount of water flow. Set the water flow to display 1.5 liters/min.

7. The super acidic water should be taken from the acidic water hose.





## 9. Panel Introduction

### Function (FUN):

- 1) The function button allows you to switch between pH and ORP readings on the LCD screen when the water is flowing through the unit.
- 2) When the water is not flowing through the unit you may press the FUN button to bring up the pH reading for each setting.

### Setup (SET):

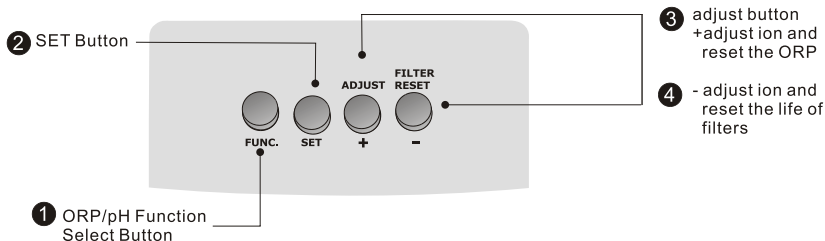
The setup button is the button labeled "SET". This button is used to calibrate the pH readout on the LCD screen. You may use a digital pH meter to see the exact pH your unit produces. After obtaining an exact reading, press the SET button. The pH reading on the LCD monitor will start blinking. Using the "+" and "-" buttons, set the pH to what the digital meter reads. Press SET to lock in the pH value for that setting.

### pH Increase (+):

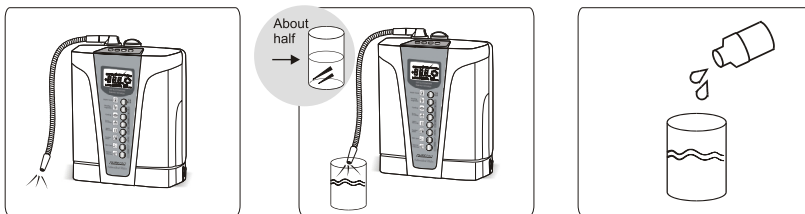
This button can increase the levels of pH or ORP displayed on the LCD screen.

### Reset (-):

- 1) This button can decrease the levels of pH or ORP that is displayed on the LCD screen.
- 2) The reset button can also reset the filter life (see Filter Replacement Procedure page)



## 10. Testing the pH of Your Water

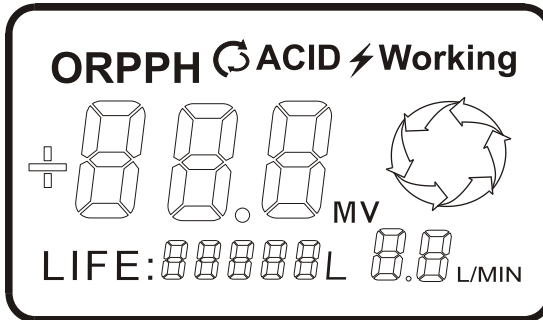


1. Turn on your water ionizer and set it to the pH setting you want to test.
2. Fill the testing container no more than half full.
3. Add no more than 2-3 drops of the pH testing solution to the water.
4. Compare the color of the water to the pH color chart that comes with the test kit.

**All disease thrives in an acid environment and will not thrive in an alkaline environment.** You can check your body pH with the color indicator drops using the same method for checking the pH of the water. The most accurate urine pH reading should be measured first thing in the morning; however, body pH on any given day can be high or low for any number of reasons. For an accurate profile of body pH it is best to take measurements each morning for several days, weeks and then months to get a moving average. Depending on how alkaline your diet is, consistently drinking a sufficient amount of Ionized Water each day will cause a trend of raising the body's alkalinity toward neutral. As the acid condition of the body worsens, it destroys cell walls, corroding veins and arteries and eventually entire organs. The skin of an overly acidic person is markedly more wrinkled, worn, unhealthy and prone to disease compared to someone whose body is more alkaline. The ideal body pH is around 6.8 – 7.0, although you will find that this range is debated to some degree amongst naturalists.

Drinking Ionized Water reduces the body's acid level as it balances the body's overall pH, which is not measured through the blood, but through the urine or saliva. However, raising the overall body pH will most likely take some time. Acid waste does not accumulate throughout the body overnight and it will not be flushed out overnight. Years of accumulated acid waste in the joints, around the organs, in the brain and throughout the body takes months and even years to completely expunge. As to how quickly you will rid the body of acid waste will also depend on your diet and other lifestyle factors.

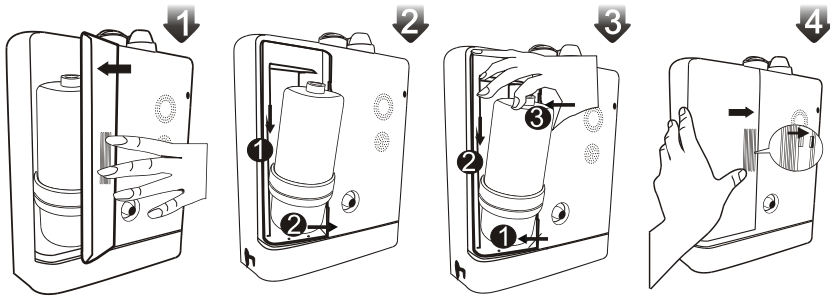
## 11. Filter Replacement



1. Change the filter (see previous page).
2. Turn the water flow completely off.
3. Press the FUN button until the LCD screen reads "CLN".
4. While CLN is displayed on the LCD screen press the SET button. The LCD screen should start to blink "CLN".
5. While CLN is blinking press the "-" button. This will reset the filter "LIFE" at the bottom of the LCD screen.

## 11. Filter Replacement

1. Open the filter door on the left side of the water ionizer in the back.
2. Push down slightly on the filter and pull it outward/away from the unit.
3. Put the button of new filter in first and push down. The spring beneath the filter housing will push the filter into the filter housing at the top of the unit. Once the filter is properly seated, push the filter up with your fingers to be certain it is secure and will not leak from the top. If the filter is not properly seated, water may not flow through the unit properly.
4. Replace the filter door.



When using the new filter, flush the filter cartridge by running tap water for 2 minutes. **DO NOT SWITCH ON ELECTRICAL POWER DURING CARTRIDGE CLEANING.**

# 12. Troubleshooting

## Frequently Asked Questions

### **Q1: What is the white substance collecting in the water?**

A1: Alkaline-forming minerals which include Calcium, Magnesium, Sodium, Potassium, Iron and Manganese. The minerals will gather after boiling the alkaline water; they will also gather on the bottom and sides of cups used for drinking water. This is not harmful to the body. White vinegar may be used to remove mineral deposits.

### **Q2: What kind of source water should be used with my ionizer?**

A2: Normal city tap water or potable well water can be used. Water must have alkaline minerals such as Calcium, Magnesium, Potassium, etc. DO NOT use purified, reverse osmosis, softened or distilled water!

### **Q3: Do I need to unplug the unit if it is unused for a week or more?**

A3: Yes. Unplug the unit and remove the filter. Store the filter in a clean plastic bag in the refrigerator (not the freezer). When ready to use the ionizer again put the filter back in the unit and run acidic water for 1 minute.

### **Q4: Why is the water so cloudy?**

A4: The cloudiness is caused by tiny bubbles, which are caused by the ionization. The cloudier the water, the higher the pH.

### **Q5: Why can't we take medications with alkaline water?**

A5: Alkaline water can cause some medications to metabolize faster in the body. To make sure the medications work as they are intended to, use water with a neutral pH of 7.0 when taking medications.

### **Q6: Can newborn babies drink alkaline water?**

A6: Use Filtered Water (neutral pH of 7.0) for newborns up to 3 months of age when preparing formula. For babies older than 3 months you can start giving the baby mild alkaline water. As the child grows, keep in mind that packaged foods, packaged juices (not juiced fresh) and "fast" foods all add to the body's acidity. Increase the alkalinity of the child's water accordingly.

### **Q7: What does the acidic water do?**

A7: Acidic water is used for killing germs, cleansing, sterilizing and healing. The very low pH (4-6) kills bacteria on contact. Acidic water is also good for plants and for washing skin, as skin has a slightly acidic pH. Never drink acidic water. It is for external use only!

### **Q8: How much alkaline water should you consume every day?**

A8: We recommend at least one quart of ionized water for every 30 pounds of body weight. Work up to this gradually and exceed if possible to gain the most benefits from consumption of alkaline ionized water.

## 13. Limited Warranty

### A. What the Warranty Covers:

We warrant the Water Ionizer to be free of any defects with the material and workmanship during the warranty period. If a product proves to be defective during the warranty period, we will repair the unit with replacement parts.

### B. Terms of the Warranty:

The warranty is for one year on all parts and labor, limited to defects in materials and manufacturing only, and only for non-commercial use. Extended warranties are available upon request. Repair or replacement will be the option of your local dealer. Customer must contact their local dealer for a Return Authorization Number before items will be accepted for repair during the warranty period. Insured shipping costs are the customer's responsibility.

### C. Warranty Exclusions:

- I. Any product on which the serial number has been defaced, modified or removed.
- II. Damage, deterioration or malfunction resulting from:
  - a. Accident, misuse, neglect, fire, water, lightning, or other acts of nature, unauthorized product modification, mishandling or failure to follow instructions supplied with the product.
  - b. Repair or attempted repair by anyone not authorized to perform repairs.
  - c. Damage of the product due to shipment after initially received by customer.
  - d. Removal or installation of the product.
  - e. External causes to the product, such as electric power fluctuations or failure.
  - f. Use of supplies or parts not meeting our specifications.
  - g. Normal wear and tear.
  - h. Any other cause which does not relate to a product defect.
  - i. Internal or external cleaning of the ionizer.

---

DISCLAIMER: Although water ionizers are certified as medical devices in some countries, the statements enclosed have not been evaluated by the Food and Drug Administration. This User Guide, nor any statements made by your local dealer or distributor regarding the consumption of alkaline ionized water, are not intended to diagnose, treat, cure, or prevent any disease. Information and statements made are not intended to replace the advice of your physician.

Neither the manufacturer, distributor nor your local dealer are responsible for typographical errors.

## 14. Specifications

Electrolysis Chamber	Electrodes are platinum-coated titanium
Electricity	DC-2A~6A
Voltage	AC110V (220V available by request)
Power Consumption	Max 200 Watts, depending on model
Electrical Cord	5 Feet - 3 prong plug
ORP Level	+800mV to -700mV*
Fuse Protected	4 Amp
Dimensions	W250 x H330 x D155 mm
Filter Capacity	Approximately 10,000 Liters (10,600 quarts or 2,650 gallons)
Chlorine Removal	< 0.0001ppm ( 99.9999%)
Water Temperature	39 degrees to 98 degrees Fahrenheit (4 degrees to 39 degrees Celsius)

\* Depending on source water.